

Cardiovascular

Cardiovascular Compactness without Compromise

MyLab40[™]
Cardiovascular

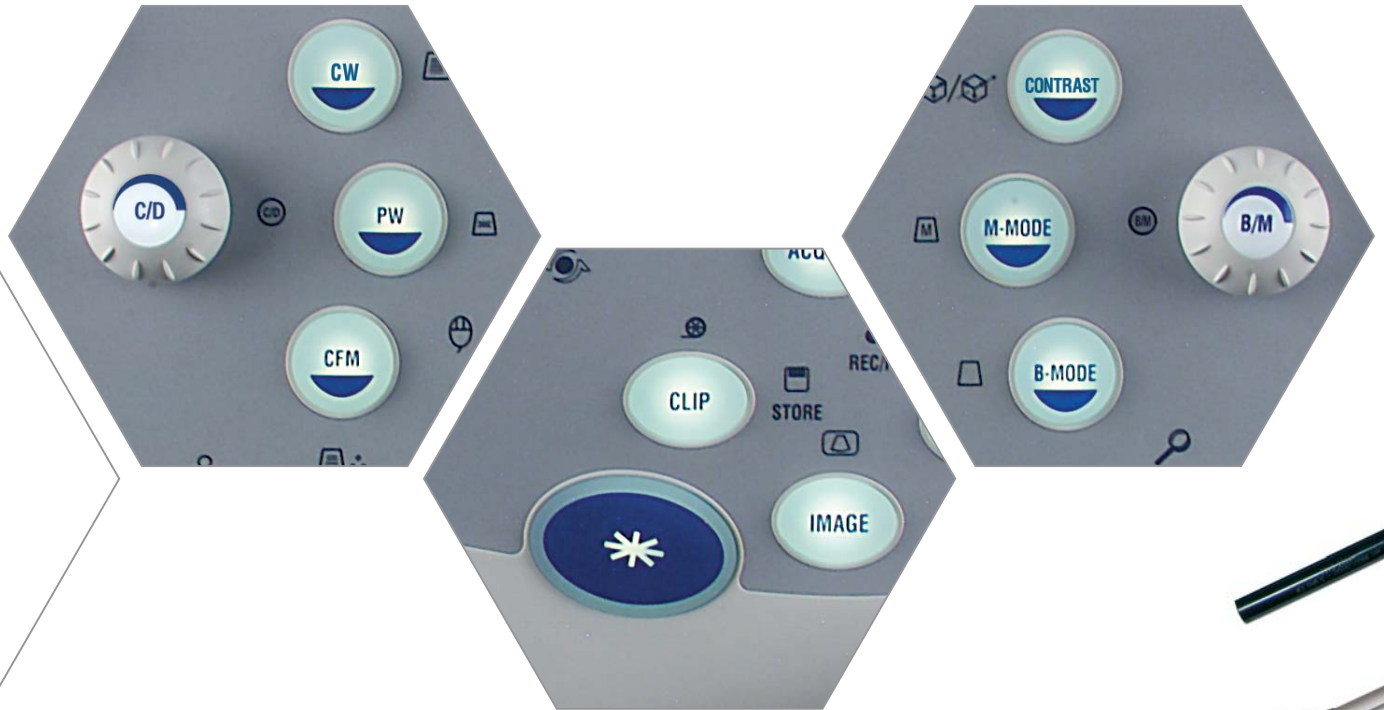


esaote



No Compromises

- > Adult and Pediatric Cardiology
- > Main and Peripheral Vascular
- > Transcranial Imaging



Due to dedicated cardiovascular specific transducers and application packages, the **MyLab40** is an asset to every cardiovascular ultrasound laboratory, whether a private practice, specialized clinic or hospital department.

The **MyLab40**'s high sensitivity color and CW and PW Doppler images are displayed on its 19" LCD monitor with adjustable arm, increasing user comfort and reducing eyestrain.

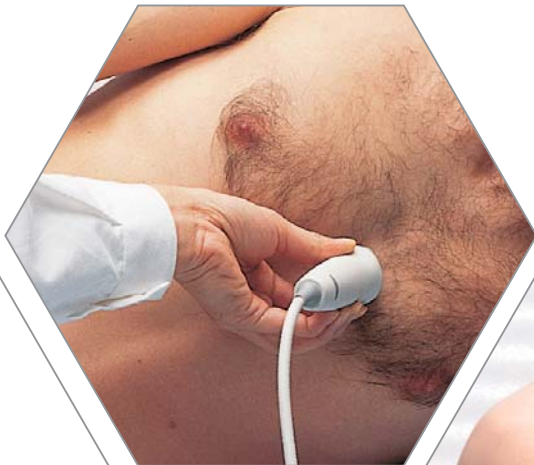
The full-digital technology of the **MyLab40** delivers optimal images for various cardiology exams, while the Doppler information can be obtained in an easy, fast and precise way.



Cardiology and Vascular



- > TEI™ - Tissue Enhancement Imaging
- > Compass M-Mode
- > TVM - Real-time Tissue Velocity Mapping
- > Integrated Stress-Echo Module



> Cardiology

The superb contrast and detailed resolution of TEI technology give enhanced diagnostic confidence and is available on all probes. Easy-to-use, one-button access and quick response time make TEI a true technological advantage for the ultrasound user.

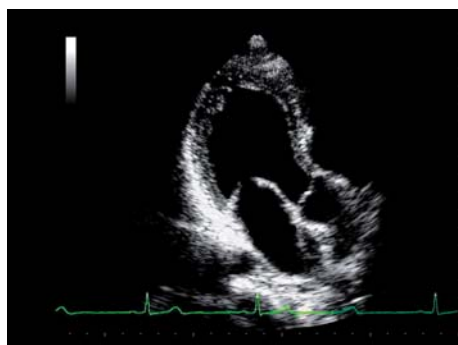
The innovative Compass M-Mode tool allows up to two M-Mode lines to be placed and multiple measurements to be made on one image without moving the patient.

By assigning different colors to the heart's tissue based on its instantaneous velocity, real time TVM (Tissue Velocity Mapping) provides a complete wall motion analysis for both systolic and diastolic myocardial function evaluation.

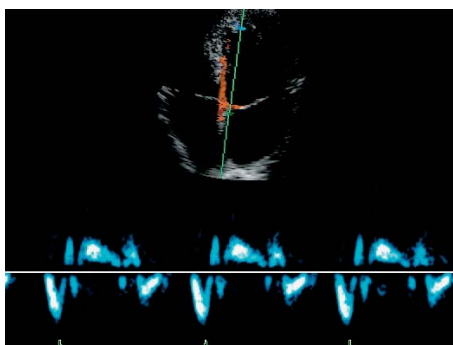
Additionally, Automatic Doppler Tracing is an easy-to-use tool for Doppler spectrum and analysis and can help to improve efficiency and increase workflow.

The integrated Stress-Echo Module, when digitally synchronized with the ECG trace, includes programmable protocols and multi-format reviewing capabilities for accurate monitoring of cardiovascular pathologies.

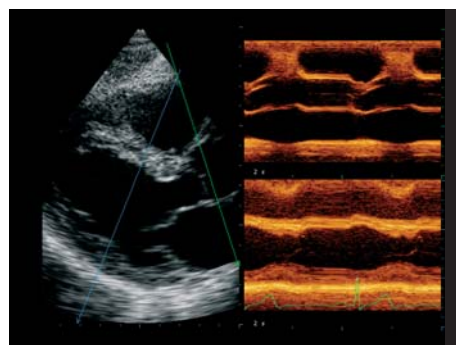
The MyLab40 is compatible with a wide range of transducers including phased array and transthoracic probes. The esophageal probes are available for both adult and pediatric applications.



Apical view of the heart



Four-chamber view of the heart with TVM and Doppler



CMM on LV and Aorta

- > **Dedicated Multi-Frequency Transducers**
- > **Automatic Doppler Tracing**
- > **TEI™ - Tissue Enhancement Imaging**
- > **High Performance Triplex Mode**

Vascular



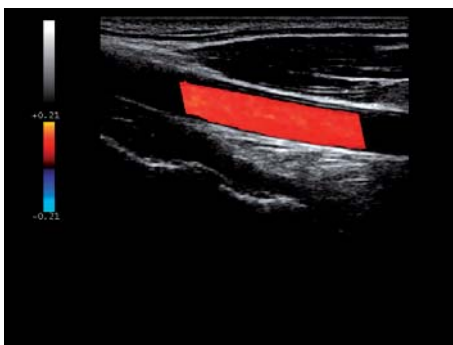
> Vascular

A complete range of ergonomic and lightweight multi-frequency transducers available on the **MyLab40** allows the system to produce optimal images in all aspects of vascular imaging. Standard vascular examinations can be easily performed with the linear transducers, but specific probes designed for superficial and peripheral vascularization imaging are also available, as well as non-imaging **Doppler** pencil probes. Moreover, due to the well-designed phased array transducer with high-sensitivity **Power Doppler**, transcranial examinations can easily be performed, satisfying the growing demand of neurological departments.

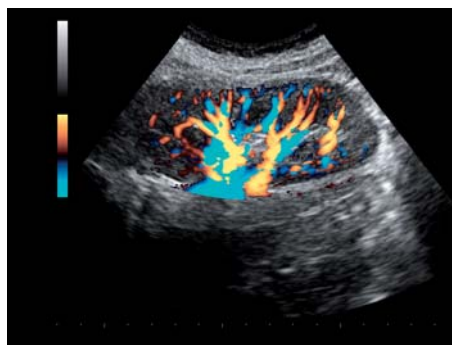
The **Automatic Doppler Tracing** feature is a timesaving feature that can help to improve efficiency and patient throughput.

High-quality images in terms of contrast resolution and signal-to-noise ratio are a result of the **MyLab40's TEI (Tissue Enhancement Imaging)** feature, an added advantage in vascular imaging.

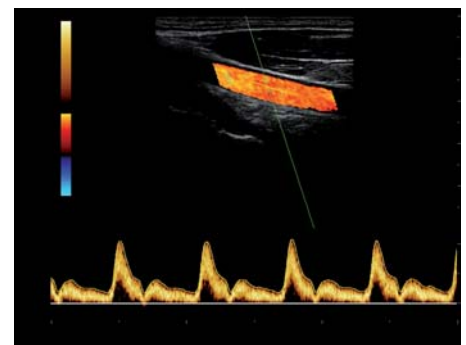
Additionally, the **MyLab40** has been equipped with an extensive vascular package in order to have a complete set of measurements and calculations.



Carotid artery in CFM



Kidney in Power Doppler



Carotid artery in triplex mode

- > IHE Compliance
- > Windows® and DICOM compatibility
- > MyLab Desk, BioPACS™ and Org@nizer™ image management



Limitless Connectivity

> USB, DVD Image Management

The MyLab40 integrates today's USB and CD/DVD image and data management capabilities. When selecting the final storage destination, the operator can easily choose from the integrated hard disk, DVD/CD burner, personal USB memory drive and/or network storage. Additionally, several types of USB and PC printers can be used. Having been tested and evaluated for efficient workflow in hospital-wide connectivity, the MyLab40 is also IHE (Integrating the Healthcare Enterprise) compliant.

> Post-processing Solutions

Esaote designs its ultrasound systems to be an integral part of a digital ultrasound department and not only a stand-alone piece of equipment. Therefore, the MyLab40 offers a direct connection to external workstations both in Windows® and DICOM environments. The modular configuration of the external workstation allows the user to choose his or her level of integration and offers the highest upgrade capability. The latest image management solution from Esaote, MyLab Desk, is an ideal solution for private offices, increasing their workflow and productivity. MyLab Desk installs the MyLab40's user interface on a standard PC, allowing comfortable reviewing and processing with all the features of the PC.





MyLab40™
Cardiovascular



Windows® is a registered trademark of Microsoft Corporation



Esaote S.p.A.

International Activities: Via di Caciolle, 15 50127 Florence, Italy, Tel. +39 055 4229 1, Fax +39 055 4229 208, international.sales@esaote.com

www.esaote.com

FRANCE

Esaote France S.A.R.L.
22, rue Pierre Grange, 94124 Fontenay-sous-Bois
Tel. +33 1 4871 2525, Fax +33 1 4871 3630
esaote.france@wanadoo.fr

GERMANY

Esaote Biomedica Deutschland GmbH
Max-Planck-Straße 27a, 50858 Köln
Tel. +49 811 9986 490, Fax +49 811 9986 4920
esaote@esaote.de

SPAIN

Esaote España S.A.
Avda San Sebastian, s/n 08960 Sant Just Desvern, Barcelona
Tel. +34 93 473 2090, Fax +34 93 473 2042
info@esaote.es

THE NETHERLANDS AND BELGIUM

Pie Medical Benelux B.V.
P.O. Box 1132, 6201 BC Maastricht
Tel. +31 43 3824650, Fax +31 43 3824651
benelux@pie.nl

INDIA

Esaote Asia Pacific Diagnostic Private Limited
F-1, Level 1, Global Arcade, Near Global Business Park,
M.G. Road, Gurgaon (Haryana)-122002
Tel. +91 124 4775600, Fax +91 124 4775699
amit.aggarwal@esaote.com

USA

Biosound Esaote Inc.
8000 Castlaway Drive,
P.O. Box 50858, Indianapolis, IN 46250
Tel. +1 317 813 6000, Fax +1 317 813 6600
info@biosound.com

CHINA

Esaote China Ltd
18/F, 135 Bonham Strand Trade Centre,
135 Bonham Strand, Sheung Wan, Hong Kong
Tel. +852 2545 8386, Fax +852 2543 3068
esaote@esaotechina.com

RUSSIAN FEDERATION AND CIS

Esaote S.p.A.
18 Leningradsky prospekt, off. 5 and 6, Moscow 125040
Tel. +7 495 232 0205, Fax +7 495 232 1833
esaotemoscw@mtu-net.ru info@esaote.ru

ARGENTINA

Esaote Latinoamérica S.A.
San Martín 551, Cuerpo 'C', Piso 8, (C1004AAK) Buenos Aires
Tel. +54 11 4326 1832, Fax: +54 11 4328 1245
info@esaote.com.ar

UK

Esaote Europe BV
UK Branch Office, 400 Thames Valley Park Drive,
Reading, Berkshire. RG6 1PT
Tel. +44 118 965 3500, Fax +44 709 288 0231
ukinquiries@esaote.nl