

GE Healthcare

# Ultrasound for your diagnostic needs

LOGIQ C5 Premium



## Advanced imaging To help enhance patient care

The LOGIQ C5 Premium color ultrasound system is well suited for clinics and hospitals covering general imaging, OB/GYN, and cardiovascular applications to help enhance the quality of your patient care.

A streamlined design, small size, superb ergonomics, and user-friendly operation make this system easy to be transported and use in the care area where it's needed. Versatile TruScan architecture gives you access to raw image data that makes virtual rescans possible.

The LOGIQ C5 Premium features many of the same technological innovations found on GE's premium ultrasound systems, including harmonics, Speckle Reduction Imaging, B-Steer and LOGIQ view.

As the leading system in our line of value ultrasound systems, LOGIQ C5 Premium delivers robust capabilities from our portfolio, such as Tissue Doppler Imaging and Auto IMT. These imaging advancements combine in a single system to help you in cardiac and vascular imaging, along with heart function evaluation. The system also features a Training Model, which provides reference planes and text guidance to help novice users better understand ultrasound standard planes.





# See what you need...

Incorporating advanced technologies migrated from GE's premium ultrasound platforms, LOGIQ\* C5 Premium delivers fast image acquisition and excellent image quality. This can lead to increased efficiency and enhanced diagnostic confidence. So you can better care for your patients.

## TruScan\*

Provides exceptional ultrasound performance and enables virtual rescan. This provides access to raw image data for comment, measurement and optimization—even after your patient has left the exam room.

## Harmonics

Both Tissue Harmonics and Phase Inversion Harmonics provide high spatial resolution and deep penetration to assist in the visualization of smaller objects.

## Auto Optimization

Enhances quality of images—including TGC, B-Mode, and Doppler—at the touch of a button.

## LOGIQview

Provides panoramic imaging of anatomy that would otherwise be too large to display on a single image.

## Anatomic M-Mode

Adjustable M cursor positioning allows angle corrections for accurate measurements of frozen and live images. Captures an entire apex to base cardiology data set using raw digital clips. Create, align and measure M-Modes in multiple planes, adjusting for anatomical variations in organ alignment.

## Auto Trace

Automatically traces the Doppler spectrum to determine the max flow velocity in every systolic cycle.

## CrossXBeam\*

Enhance border definition to help improve tissue differentiation and enhance contrast resolution.



Without CrossXBeam



With CrossXBeam

## Speckle Reduction Imaging (SRI)

Preserves border definition where echogenicity differences occur and reduces speckles (noise) where it obscures underlying anatomy to help indicate differences in tissues and anatomy.



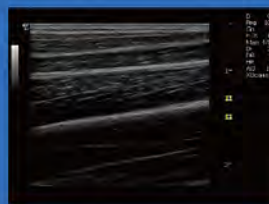
Without SRI



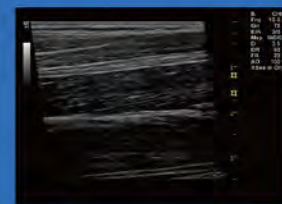
With SRI

## B-Steer

Helps visualization of deep vessels, needle and lesions.

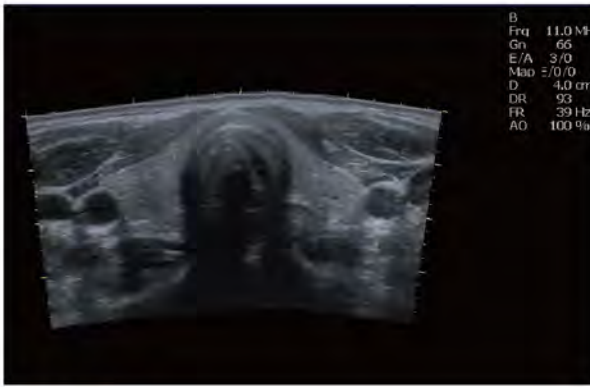


Without B-Steer



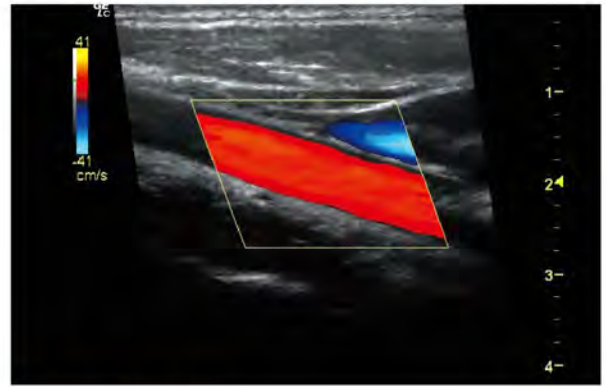
With B-Steer





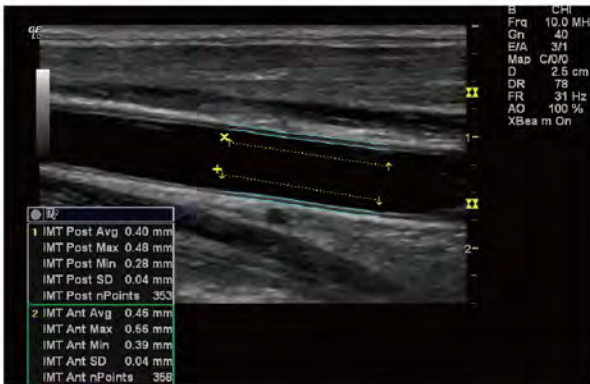
### LOGIQview

Provides panoramic imaging of anatomy that would otherwise be too large to display on a single image



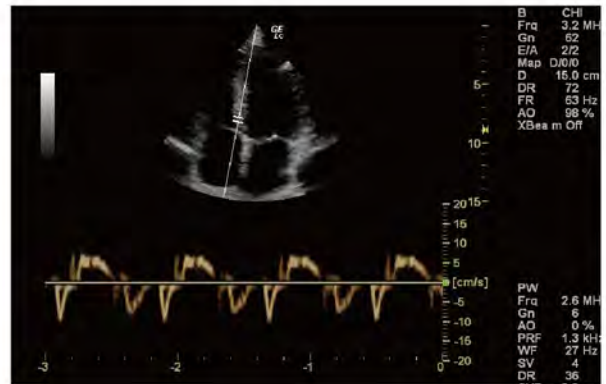
### B-Steer with Color

Color mode is applicable to B-Steer



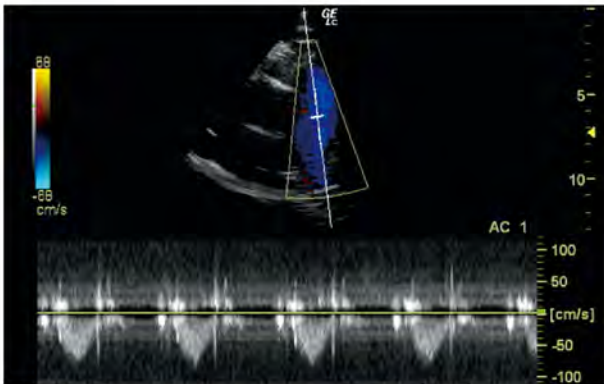
### Auto Intima-Media Thickness (Auto IMT)

Helps lessen the length of time to assess the common carotid artery



### Tissue Doppler Imaging (TDI)

Doppler Imaging quantifies low-velocity myocardial motion



### Continuous Wave Doppler (CWD)

Measures high velocities in valves stenosis and regurgitation



### Training Model

Provides reference planes and text guidance to help novice users

# Use what you want...

LOGIQ C5 Premium provides enhanced features to help enhance diagnostic confidence.

## Exceptional ergonomics

LOGIQ C5 Premium's lightweight design and fold-down monitor help ensure easy system movement. And though it may occupy a small space, it can help improve productivity. Superb ergonomics and user-friendly features help to promote comfortable operation and can help increase efficiency.

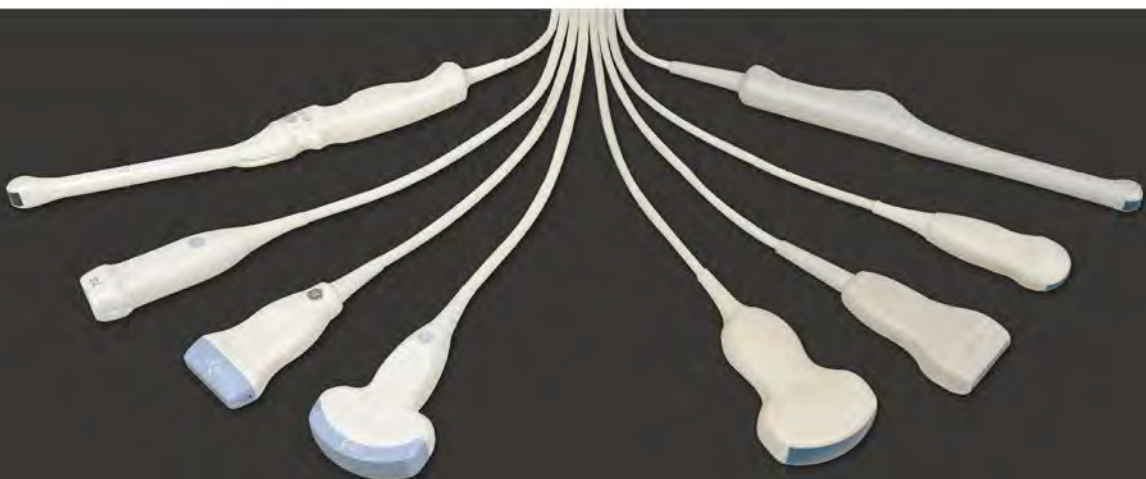
- High-resolution, wide-angle 15"-LCD that tilts and swivels to help improve the view angle
- Ergonomic hard key operation with backlit keys
- Logically placed keys for easy navigation
- Up to 32 user-programmable presets for quick system setup
- Hot keys and user-defined special keys for fast, convenient operation of common features

# ...quickly and easily.

## Efficient data management

Saving and archiving images is an important part of the diagnostic process. LOGIQ C5 Premium has been designed to help simplify data management, with connectivity solutions that help you archive and maintain patient data in an organized manner.

- JPEG and AVI format
- CD/DVD-RW storage
- QuickSave provides one-touch transfer of images directly to USB memory device
- DICOM enables connectivity with workstations to help improve management of imaging data



Advanced transducer technology to help meet your clinical needs.



©2012 General Electric Company – All rights reserved.

GE Healthcare, a division of General Electric Company.

General Electric Company reserves the right to make changes in specifications and features shown herein, or discontinue the product described at any time without notice or obligation. Contact your GE representative for the most current information.

\* GE, GE Monogram, LOGIQ, TruScan and CrossXBeam are registered trademarks of General Electric Company.

#### Europe

GE Healthcare  
Beethovenstr. 239  
D - 42655 Solingen  
T 49 212 2802 0  
F 49 212 2802 28

#### Asia

GE Healthcare  
GE China Technology Park  
3rd Floor, Building 1,  
1 Hua Tuo Road  
Shanghai -201203  
T 86 21 38774000

## About GE Healthcare

GE Healthcare provides transformational medical technologies and services that are shaping a new age of patient care. Our broad expertise in medical imaging and information technologies, medical diagnostics, patient monitoring systems, drug discovery, biopharmaceutical manufacturing technologies, performance improvement and performance solutions services helps our customers to deliver better care to more people around the world at a lower cost. In addition, we partner with healthcare leaders, striving to leverage the global policy change necessary to implement a successful shift to sustainable healthcare systems.

Our “healthymagination” vision for the future invites the world to join us on our journey as we continuously develop innovations which focus on reducing costs, increasing access, and improving quality around the world. Headquartered in the United Kingdom, GE Healthcare is a unit of General Electric Company (NYSE: GE). Worldwide, GE Healthcare employees are committed to serving healthcare professionals and their patients in more than 100 countries. For more information about GE Healthcare, visit our website at [www.gehealthcare.com](http://www.gehealthcare.com)

GE Healthcare  
9900 Innovation Drive  
Wauwatosa, WI 53226  
U.S.A.  
[www.gehealthcare.com](http://www.gehealthcare.com)



GE imagination at work